

Product Data Sheet



Rockseal® RS750–Roxul® 1000

Engineered mineral fibre (note Q) for application in gasket materials

lapinus@lapinusfibres.com
www.lapinusfibres.com

Rockseal® RS750–Roxul®1000 is a low cost easy to disperse quality fibre

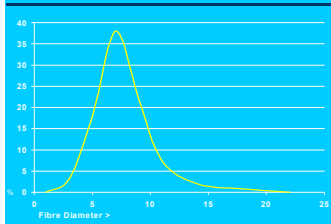
Roxul®1000 chemistry =biosoluble chemistry

All Roxul®1000 products are worldwide exonerated from classification as a carcinogen.

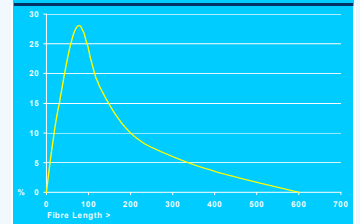
Chemical Analysis

	Min.	Max.
Al ₂ O ₃	18 %wt	23 %wt
SiO ₂	38 %wt	43 %wt
CaO+MgO	23 %wt	28 %wt
FeO	4.5 %wt	8 %wt
K ₂ O+Na ₂ O		4.5 %wt
Others		6 %wt

Typical average fibre diameter



Typical average fibre length



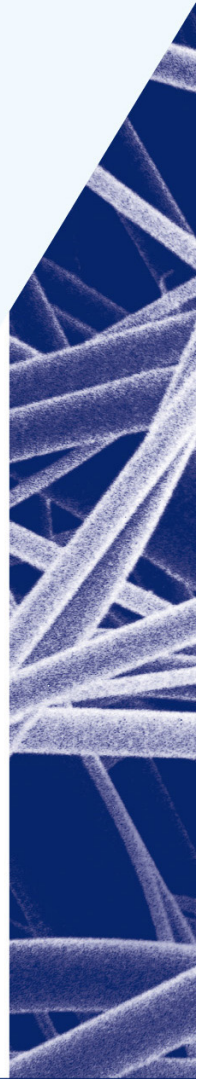
ADVANTAGES OF ROCKSEAL® RS750–ROXUL®1000

- Rockseal® RS750–Roxul®1000 is consistent in quality in terms of:
 - chemical composition
 - shot content
 - fibre length

Parameter	Average/Tolerance	Testmethod
Non-Fibrous Material	Norm. Max. N > 125 µm 3.0%wt 5.0%wt	TV 316
Fibre Length	125 ± 25 micron	TV 305
Ignition Loss	max. 0.3 %wt	TV 302
Moisture Content	max. 0.1 %wt	TV 302
Fibre diameter (mass wt. av.)	approx. 9.0 micron	TV 165
Fibre diameter (num. av.)	approx. 5.5 micron	TV 165
Specific surface area	approx. 0.20 m ² /g	TV 165
Hardness	6 Moh	
Melting Point	> 1000 °C	Furnace, Visual
Specific Density	2.75 ± 0.15 g/cm ³	
Colour	Grey/Green	Visual

Author: E. Huynen (ADC)
Issue: november 2010(01)

Replaces Issue:
ISO 9001 LF007.F08



"The information contained herein is based upon data considered to be accurate. However, no warranty is expressed or implied regarding the accuracy of these data, the results to be obtained from their use thereof, or any such use will not infringe upon any patent. This information is furnished only as a guide and upon the condition that the person receiving it shall make tests to determine its accuracy and suitability for his or her own purpose".